



NWA 2022 FALL PARADE OF HOMES
SEPTEMBER 23 - 25, 2022 | ONLINE SHOWCASE: SEPTEMBER 16TH - 18TH

NWAPARADEOFHOMES.COM

TABLE OF CONTENTS

Contents 2

Welcome 3

Builder Pages 4-13

Parade Map. 14

Parade Entries Competing. 15-23

Parade Entries Non-Competing 24-27

Parade Advertisers. 28-37

Thank You to the Sponsors. 38

2021 Parade Winners 39

NWA HBA Builder Members 40-41

NWA HBA Associate Members 41-43

Please download the digital Parade Guide at nwaparadeofhomes.com.

Cover Picture: 10395 Sears Road, Bentonville | Sapphire Homes



WELCOME!

Welcome to the 31st annual Parade of Homes!

We hope you will join us this September to help us celebrate our Northwest Arkansas builders. We have seen extraordinary growth over the past 2 years, and our builders have been working so hard to provide beautiful homes in our communities. Our NWA Parade of Homes is a chance for you to see their work, and to help us celebrate their success!

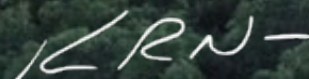
Join us September 16-18, 2022 for our Online Parade Showcase on our website at nwaparadeofhomes.com. Take virtual tours of our homes, visit our photo galleries, and be sure to vote for your favorites!

Our FREE In-Person Parade tours will be September 23-25, 2022. Plan your route using our tour map and visit our extraordinary homes! We invite you to walk through the open houses and visit with our fabulous builders. They have worked so hard on these amazing homes to provide spaces that are beautiful and inviting... making Northwest Arkansas one of the best places to live in America.

There is something for everyone in this year's parade. We are showcasing 3 unique neighborhoods this year: Aurora, Scissortail, and The Grove. Our featured homes range in price from \$275,000 to \$1,500,000, and everything in between. Over the three tour days I encourage you to visit all of our homes: you will see different styles and meet different builders, but they all show remarkable quality, creativity and craftsmanship. This year we are also adding an "Incomplete Home" category so you can drive by the home entry and check out the neighborhood.

If you are looking to build or purchase a home in Northwest Arkansas, you will have a chance to meet the builders and representatives in each home. They will be able to answer any questions and connect you to the home of your dreams. Even if you are not in the market to buy a home, we are proud to show off some remodeled homes in this year's parade, to help give you ideas about your home projects and technology.

Please visit our website at nwaparadeofhomes.com today to get a sneak peek of our featured homes. We also have an interactive map on our site to help you plan your weekend tour of our 31st Annual Parade of Homes. And don't forget to register for some of our awesome prizes! We will see you there...



Kevin Nau
Artisan Design + Construct, Inc.
2022 Chair, NWA Parade of Homes



The Hollows

AT BEAVER LAKE



LUXURY HOMES
BUILT TO SUIT
ON 1 ACRE LOTS
STARTING AT \$750,000

EXCLUSIVELY LISTED WITH
CHARITY STEVENS OF THE SUDAR GROUP
www.charity.sudargroup.com

the sudar group
REAL ESTATE CO.



ABOUT KEY CONCEPTS

From drawing on walls as a child to crafting some of the most amazing homes, developments and commercial buildings throughout his career, Joseph S. Stevens has come full circle! Now his drawings on walls are a staple signature. His innovations, problem solving or instructions can be found during the building process on at least one unfinished wall during a project!

As one of Northwest Arkansas' up and coming Luxury Home Builders, Joseph's passion for planning, design and construction led him to create KEY CONCEPTS in 2019, where he and his team offer planning, design, construction, and development opportunities for any type of build. His "luxury boutique service" approach to project management allows his clients to have a stress-free build experience and enjoy a process that is known to be one of life's five most stressful stages.

Joseph began his career in 1997 as a draftsman for one of Little Rock's largest Architectural Firms. This is where he built his knowledge portfolio of design development, writing specifications, strategic planning and producing construction drawings while administering the construction process for hundreds of projects. In 2004, he decided to add a Construction Management Degree from the University of Arkansas at Little Rock and received his contractor's license in 2005, which was the start of his now design-build career.

With his understanding and knowledge of the design process from inception to completion, Joseph can collaborate with an owner, financial institutions, engineers, designers, city municipalities, suppliers, and sub-contractors to seamlessly complete their project and exceed an owner's expectations.

Unlike larger companies, Joseph is personally active in the overall delivery of services in all phases of each project working daily with his team to maintain an owner's expectations as part of their luxury experience. His portfolio is lined with design/build projects from single-family custom homes to multi-family apartments, tenant finish outs to retail centers, churches, schools, court houses, convenience stores and several large-scale land developments of 200 plus lot subdivisions.

Joseph and his wife, Charity Stevens, reside in Lowell, AR with their three amazing children. His passions involve anything he can do with his family as they are the rocks in his life that are unmovable. Joseph has been involved with the Northwest Arkansas Home Builder Association since 2018 and was appointed to the Home Builder Association Board in 2021 where he is actively involved. Joseph is also a member of the US Green Building Association and American Institute of Architects.





FEATURING CAMBRIA WHITEHALL™



See more of this Brandon Schrock timeless classic, featuring Cambria Whitehall™ quartz countertops, double islands, with white oak cabinets and flooring at NWACustomHomes.com



2021 NWA PARADE OF HOMES TRIPLE AWARD WINNING HOME

NWACUSTOMHOMES.COM



CUSTOM HOMES WE LOVE FEATURING CAMBRIA WHITEHALL™



Visit Brandon Schrock Custom
Homes online at
NWACustomHomes.com to see
more gorgeous custom homes
featuring classic Cambria
Whitehall™ countertops.

NWACUSTOMHOMES.COM



Our team at Sapphire Homes combines craftsmanship, luxury and innovation into every designed floor plan and home we build. Our light-filled homes inspire aspirations and dreams, and that's why each home is built for the life you love. Your home is your castle. Make it a *Sapphire*.





SAPPPIREHOMESNWA.COM | 479.668.2299



YOUR NEW HOME *awaits!*



**EVERYWHERE YOU WANT TO BE
ACROSS NORTHWEST ARKANSAS!**

OUR NEW HOME COMMUNITIES:

Cedar Bluff • Huntsville

Cottages at Clear Creek • Springdale

Creekside Meadows • Fayetteville

Crystal Springs • Fayetteville

Fox Tail • Siloam Springs

Lakewood Crossing • Lowell

Lincoln Place • Lowell

Morningside Estates • Centerton

Park Meadows • Fayetteville

Prairie View • Prairie Grove

Providence Village • Bentonville

Stokenbury • Elkins

Walnut Hill • Pea Ridge

Willow Creek • Rogers

CALL TODAY!
844.4RCHomes • RCH.com





Stop by our parade home located at
303 S. Emerald Woods Run, Farmington, AR 72730

Riverwood Homes is built by family for family. We welcome you to come see our latest Farmington community, The Grove at Engles Mill. The Grove offers homes ranging from 1408-2952 sq ft. Come talk to us about current and future opportunities. For more information or questions, please contact our New Home Specialist, Kyla, at 479-265-5621!



3420 N. Plainview Ave., Fayetteville, AR 72703 | (479) 265-5621 | RiverwoodHomesNWA.com

SCISSORTAIL

DREAM IT. BUILD IT. LIVE IT.

Spec Homes Under Construction

Contact an Exclusive Builder Today!

New Construction Homes Starting at \$600K



Aurora

Built To Live Your Dreams

**NOT JUST ANOTHER NEIGHBORHOOD,
IT'S YOUR COMMUNITY.**

Your Home is Under Construction

Beautiful and innovative home designs from
some of Northwest Arkansas's top builders.

Contact an Exclusive Builder Today!

Just South of Windmill Rd on
Morningstar Rd, Bentonville, AR

www.AuroraNWA.com



3 DISTINCT NEIGHBORHOODS

Halo | Horizon | Harmony

Homes Ranging from \$435K - \$725K

Bob David and Julie Vaught, Developers

Bob David and Julie Vaught, Developers

4407 Scissortail Dr, Bentonville, AR | www.ScissortailNWA.com



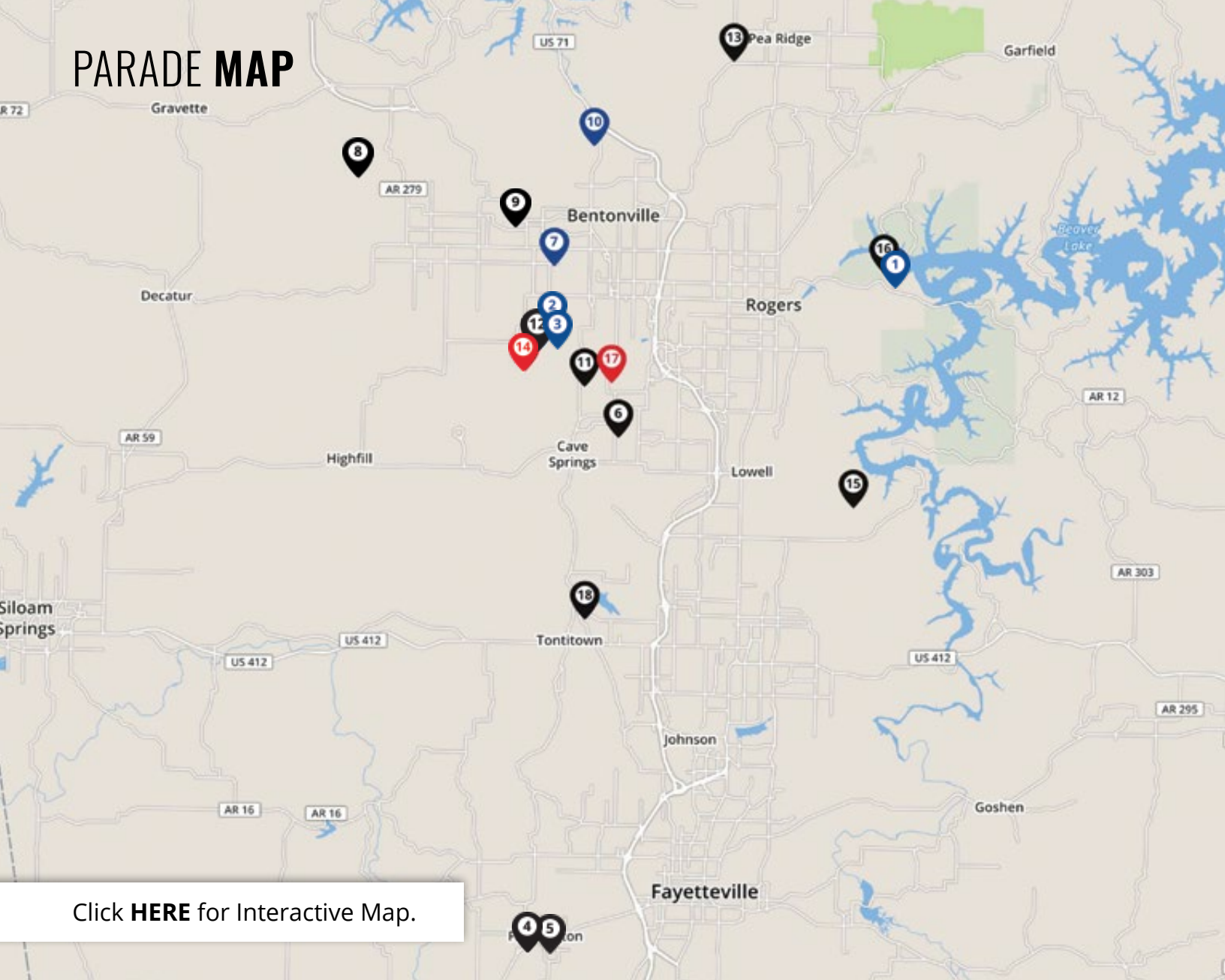


ArtisanDesignConstruct.com

479-269-3540




PARADE MAP



Click **HERE** for Interactive Map.

- | | | |
|--|--|---|
| 1 14947 Dutchman Drive, Rogers
<i>Key Concepts</i> | 7 2004 SW Paddington St, Bentonville
<i>Burckart Construction</i> | 13 2401 Armstrong Lane, Pea Ridge
<i>Schuber Mitchell Homes</i> |
| 2 3511 SW Awakening Ave, Bentonville
<i>Sapphire Homes</i> | 8 14615 Fruitwood, Gravette
<i>Calcon Construction, Inc.</i> | 14 10395 Sears Road, Bentonville
<i>Sapphire Homes</i> |
| 3 3509 SW Awakening Ave, Bentonville
<i>Sapphire Homes</i> | 9 503 SW Autumn Hills, Bentonville
<i>Calcon Construction, Inc.</i> | 15 13957 Lake Point Drive, Lowell
<i>Brandon Schrock Custom Homes</i> |
| 4 303 S Emerald Woods Run, Farmington
<i>Riverwood Homes</i> | 10 3100 NW Avignon Way, Bentonville
<i>Janacek Remodeling</i> | 16 9188 N Park Road, Rogers
<i>Artisan Design + Construct</i> |
| 5 369 S Emerald Woods Run, Farmington
<i>Riverwood Homes</i> | 11 4410 S Exeter Drive, Rogers
<i>Lance Johnson Building Company</i> | 17 4914 S Southgate Estates Circle, Rogers
<i>Celtic Construction</i> |
| 6 606 Mill Pond Way, Cave Springs
<i>Buffington Homes</i> | 12 3501 SW Starburst Avenue, Bentonville
<i>Lance Johnson Building Company</i> | 18 169 West Elm Lane, Springdale
<i>GB Group Construction</i> |

 BOTH ONLINE & IN-PERSON TOURS

 IN-PERSON TOURS ONLY

 ONLINE ONLY

KEY CONCEPTS

YourKeyConcepts.com

4 Bed, 2.5 Bath, 3,249 SqFt

Price: *Unpublished*



ABOUT THE HOME

This luxurious modern farmhouse, located in The Hollows at Beaver Lake, sets on 1.4 acres, 2 minutes from boarding your boat at Prairie Creek Marina. This stunning new construction 4 bed 2 ½ bath home was thoughtfully planned and meticulously designed. A paradigm of contemporary living, sleek modern style, a warmth of mixed designer textures, and a gratifying sense of open space makes an immediate impression upon entering this home. The long list of luxuries includes dramatic ceilings, custom wood accent walls, custom steel spiral staircase leading to a large loft area that over-looks the living room, Cambria quartz waterfall surfaces, a dramatic gas fireplace, and large sliding glass doors leading to a sprawling covered deck providing the perfect area for gatherings of all types.



DIRECTIONS: From I-49 take exit 85 for AR-12/US 71B and head East on AR-12 E/W Walnut St. towards downtown Rogers for 3.6 miles. Turn left onto N 2nd Street for .3 mi Turn right onto W Locust St for .4 mi – W Locust St. turns slightly left and becomes E Hwy 12/Prairie Creek Drive for 3.3 mi. Turn left onto N Park Rd and then take right onto Dutchmans Drive, home is located .4 mi on right.

SAPPHIRE HOMES
SapphireHomesNWA.com

2 Bed, 3.5 Bath, 2,817 SqFt
Price: *Unpublished*



ABOUT THE HOME

Welcome to Harmony by Sapphire Homes, our newest luxury living neighborhood in Aurora. These beautiful upscale cottage homes in Bentonville range from 2,100 to 2,800 sqft. This gorgeous 2 story Westyn floor plan sits at 2,817 sqft and provides stunning features around every corner, including 12 ft ceilings and endless windows for an open feel filled with natural light, waterfall quartz island and countertops, panoramic panel doors with a seamless indoor outdoor entertaining space leading to a private patio and al fresco dining, plus so much more. Built for the life you love with the ultimate luxury experience, you are centrally located within 8 miles to the Walmart Home Office, Northwest Arkansas National Airport, and the NWA entertainment district that includes The Walmart Amp, Top Golf, Pinnacle Promenade, high end retail and world class restaurants.



DIRECTIONS: From I-49 Bentonville, AR 72712, Take I-49 S to W Stoney Brook Rd in Rogers (1.6 mi). Continue on W Stoney Brook Rd. Take Elk Rd to AR-112 S/SW H St (2.2 mi). Take a slight left onto AR-112 S/SW H St (0.8 mi). Turn right onto Windmill Rd (1.3 mi). Turn left onto S Morning Star Rd (0.3 mi). Turn right onto Awakening. Arrive at 3511 SW Awakening Ave, Bentonville, AR 72713.

SAPPHIRE HOMES
SapphireHomesNWA.com

2 Bed, 2.5 Bath, 2,287 SqFt
Price: *Unpublished*



ABOUT THE HOME

Welcome to Harmony by Sapphire Homes, our newest luxury living neighborhood in Aurora. These beautiful upscale cottage homes in Bentonville range from 2,100 to 2,800 sqft. This stunning single story Riley floor plan sits at 2,287 sqft and provides outstanding 12 ft ceilings and endless windows for an open feel filled with natural light, large waterfall quartz island and countertops, oversized sliding glass doors for a seamless indoor outdoor space leading to a private patio and al fresco dining, plus so much more. Built for the life you love with the ultimate luxury experience, you are centrally located within 8 miles to the Walmart Home Office, Northwest Arkansas National Airport, and the NWA entertainment district that includes The Walmart Amp, Top Golf, Pinnacle Promenade, high end retail and world class restaurants.



DIRECTIONS: From I-49 Bentonville, AR 72712, Take I-49 S to W Stoney Brook Rd in Rogers (1.6 mi). Continue on W Stoney Brook Rd. Take Elk Rd to AR-112 S/SW H St (2.2 mi). Take a slight left onto AR-112 S/SW H St (0.8 mi). Turn right onto Windmill Rd (1.3 mi). Turn left onto S Morning Star Rd (0.3 mi). Turn right onto Awakening. Arrive at 3509 SW Awakening Ave, Bentonville, AR 72713.

RIVERWOOD HOMES

RiverwoodHomesNWA.com

3 Bed, 2 Bath, 1,862 SqFt

Price: \$359,950



ABOUT THE HOME

This one-story, single-family floorplan is 1862 sq ft of living space. This plan has 3 bedrooms, 2 bathrooms, and an attached two-car garage. The open floor plan and beautiful master bathroom are incredible additions to this plan! The interior of the home also includes ceramic tile, crown molding, gas fireplace, granite in the kitchen and bathrooms, stainless steel appliances, walk-in closets, and blinds. The exterior includes gutters, a front privacy fence, front landscaping, and a sodded yard. We will also include garage door opener, keypad entry, and attic storage.



DIRECTIONS: Go West on Highway 62 (Main St.), turn left on South Angus Lane or turn left at Grace Ln. by the Wal-Mart Neighborhood Market. The Grove is located behind Bob Folsom Elementary School.

RIVERWOOD HOMES
RiverwoodHomesNWA.com

5 Bed, 3 Bath, 2,952 SqFt
Price: \$590,950



ABOUT THE HOME

This two-story, single-family floorplan is 2952 sq ft of living space. This plan has 5 bedrooms, 3 bathrooms, an attached three-car garage, a mudroom, breakfast area, and a spacious covered patio. The open floor plan and beautiful master bathroom are incredible additions to this plan! The interior of the home also includes barn doors, ceramic tile, crown molding, gas fireplace, quartz in the kitchen and bathrooms, stainless steel appliances, walk-in closets, and privacy roller shades. The exterior includes gutters, a front privacy fence, front landscaping, and a sodded yard. We will also include garage door opener, keypad entry, and attic storage.



DIRECTIONS: Go West on Highway 62 (Main St.), turn left on South Angus Lane or turn left at Grace Ln. by the Wal-Mart Neighborhood Market. The Grove is located behind Bob Folsom Elementary School.

BUFFINGTON HOMES OF ARKANSAS BuffingtonHomesAR.com

4 Bed, 3.5 Bath, 2,556 SqFt
Price: \$565,000

ABOUT THE HOME

If you're looking for a beautiful, spacious floor plan with plenty of bedrooms for everyone, the Gramercy could be the answer to your dreams. This 4-bedroom, three-and-a-half bath home offers plenty of open space without sacrificing square footage. Walking through the entrance, past a quaint study and powder room, the kitchen opens to the expansive living and dining areas. Around the corner is a private owner's retreat with a gorgeous bay window for added space and natural light.



DIRECTIONS: From I-49 take exit 78 West on AR-264 toward Lowell/Cave Springs/Rogers for 2.8 miles. Turn right on Mount Hebron Rd for .7 miles, and left onto W Shores Ave. for .5 miles. Allen's Mill will be on your right.

7 2004 SW PADDINGTON ST, BENTONVILLE

BURCKART CONSTRUCTION Burckart.com

4 Bed, 2.5 Bath, 2,577 SqFt
Price: \$499,500

ABOUT THE HOME

The Downton plan is one of many home styles in our newest community in Bentonville. Its beautiful facade of painted brick on this southern style row home is simply an elegant classic. The Downton has 4 bedrooms, an Office, 2 Living areas, Owners suite on the main floor, Powder bath for guest, Jack and Jill Bath and plenty of storage. All of this with lawn care provided makes the Downton plan and Glen Arbor Community truly a destination and more than just a home.



DIRECTIONS: I-49 to Bentonville, West on Walton 1.4 miles to Regional Airport RD / Hwy 12 West. Go west on Hwy 12 1.9 miles to SW Featherston RD and turn right or north. Go north .9 miles and turn Right on SW Glen RD, Turn at the next right on SW Paddington St. Home is on the SW corner of SW Granshire Ave and SW Paddington St.

8 14615 FRUITWOOD, GRAVETTE

CALCON CONSTRUCTION, INC.
CalconInc.com

4 Bed, 4 full/2 half Bath, 3,550 SqFt
Price: *Unpublished*

ABOUT THE HOME

4 Bedroom, 4 Full Bath, and 2 Half Bath family home sitting on 13 acres with lively accents throughout. This was a builder personal home with hardwood water heated floors throughout the entire home. Entertainment features include Theater/Game Room, Covered Patio with heaters, Commercial Chef's Kitchen, and a Saltwater pool. Extras include a pool house steam shower and a plant room as well as a 5-car parking garage. This home is no longer on the market.



DIRECTIONS: Take exit 99 onto 279. Turn right onto Wise Man Rd go straight. Turn left onto shortly road. Turn left onto Dickson Rd. Turn right and you should see the property right away.

9 503 SW AUTUMN HILLS, BENTONVILLE

Autumn Hills

CALCON CONSTRUCTION, INC.
CalconInc.com

4 Bed, 4 Bath, 3,637 SqFt
Price: *\$849,000*

ABOUT THE HOME

Truly a gem in west Bentonville, just 3.5 miles to the Square. Beautiful new construction with spacious, open floor plan. Wired for sound. Gourmet kitchen with commercial grade appliances including 60" fridge-freezer. Three car garage, water heater with recirculating pump, full yard sprinkler, covered back porch, and will include backyard horizontal cedar privacy fence with caps! Seller offering \$10,000 toward buyers closing costs to cover interest buy down. Approximate completion mid-late August.



DIRECTIONS: Take exit 86 off from 149. Head West on Hwy. 102. Turn right on to SW Tater Black Rd. Turn left onto Town Vu Rd. Turn right onto SW Autumn Hills Rd. The house is just down the road on the right.

10 3100 NW AVIGNON WAY, BENTONVILLE

JANACEK REMODELING
JanacekRemodeling.com

4 Bed, 4 full/2 half Bath, 3,550 SqFt
Price: *Unpublished*

ABOUT THE HOME

Built in 2004, this home was in need of a fresh Remodel. Removed load bearing walls to create a spacious living room. New kitchen, laundry room and master bathroom cabinets and countertops. Custom tile designs in the master bathroom and all updated fixtures and paint.



DIRECTIONS: Follow I-49 S. Take exit 88 from I-49 S. Get on I-49 N/US-71 N. Continue on I-49 N/US-71 N to Bentonville. Take exit 93 from I-49 N/US-71 N. Take N Walton Blvd to NW Avignon Way.

11 4410 S EXETER DRIVE, ROGERS

Shadow Valley

LANCE JOHNSON BUILDING COMPANY
LanceJohnsonBuildingCompany.com

4 Bed, 4.5 Bath, 3,622 SqFt
Price: *Unpublished*

ABOUT THE HOME

Truly a gem in west Bentonville, just 3.5 miles to the Square. Beautiful new construction with spacious, open floor plan. Wired for sound. Gourmet kitchen with commercial grade appliances including 60" fridge-freezer. Three car garage, water heater with recirculating pump, full yard sprinkler, covered back porch, and will include backyard horizontal cedar privacy fence with caps! Seller offering \$10,000 toward buyers closing costs to cover interest buy down. Approximate completion mid-late August.



DIRECTIONS: From 49N take exit 78 and continue on AR-264 W. Turn right onto AR-112 N. Turn right at W Pleasant Grove Rd. Turn left onto S Exeter Drive and follow Parade Signs.

LANCE JOHNSON BUILDING COMPANY
LanceJohnsonBuildingCompany.com

4 Bed, 3.5 Bath, 3,020 SqFt
 Price: \$674,000

ABOUT THE HOME

Come visit Aurora; Bentonville's newest community. A modern home with an open floorplan, custom designed hood, contemporary tile and lights featured throughout this 2-toned home! Lots of extras make this one worth seeing! There is room to entertain family and friends in this 4 bedroom, 3.5 bath, with added bonus room upstairs. Amenities include adult and family pool with splash pad and a playground; elevate fitness course, clubhouse, a dog wash station, and bike repair station.



DIRECTIONS: From 49N take exit 78 and continue on AR-264 W. Turn right onto AR-112 N. Turn right at W Pleasant Grove Rd. Turn left on Morning Side and Aurora will be on the left.

SCHUBER MITCHELL HOMES
SchuberMitchell.com

4 Bed, 3 Bath, 2,363 SqFt
 Price: \$487,666

ABOUT THE HOME

The 2300KI Series offers a large family, dining, and kitchen area with granite countertops ideal for hosting guests. An open design layout and fireplace create a welcoming space for family time. With 2,373 square feet of living space, this home has four bedrooms and three bathrooms and includes a premium kitchen. The large primary suite offers a spacious walk-in closet, double bathroom vanities, and separate tub and shower.



DIRECTIONS: Going north on N 2nd St/N Hwy 94, turn left onto AR-72 W in Pea Ridge and then take a left onto Manfield Lane into the Avalon community. Armstrong Lane will be the first street on your left.

SAPPHIRE HOMES
SapphireHomesNWA.com

4 Bed, 3.5 Bath, 5,987 SqFt
Price: *Unpublished*



ABOUT THE HOME

Craftsmanship, luxury and innovation combine in this breathtaking 4,000 sqft Blake floor plan with a detached living quarters connected by a Porte Corchere and a detached garage built by Sapphire Homes in Northwest Arkansas. The moment you walk through the grand entryway, you are greeted with views of the gorgeous countryside through a large set of panoramic doors framing an outstanding stone firepit and tiled wow wall. The chef's kitchen features a glorious Silestone Et. Marquina quartz waterfall island, 48 inch GE Cafe 6 burner professional range, and custom maple foxtail green cabinetry. Open up the panels for a seamless indoor outdoor entertainment area with over 975 sqft of covered patio overlooking the lush 5 acre property showing off the professionally landscaped beds and walkways with river rock.



DIRECTIONS: Online Showcase only.

BRANDON SCHROCK CUSTOM HOMES
NWACustomHomes.com

4 Bed, 4.5 Bath, 4,085 SqFt
Price: *Unpublished*



ABOUT THE HOME

This timeless, and truly unique single story custom home, nestled in the hills and valleys of Lowell, was designed to bring family and friends together and enjoy all the beauty Northwest Arkansas has to offer. Designed by John Starnes Architects, a true modern farmhouse with 18-foot ceilings, open living spaces, floor to ceiling windows, a huge outdoor living area and one of the coolest owner's suites we've ever seen, make this unique beautiful home a true custom dream home. In addition to the high-end finishes throughout, barreled and groin ceilings in the master suite, the kitchen is designed with a pass-through door sitting on top of Cambria countertops taking you out to a HUGE 38×20 covered outdoor living space overlooking some of the most beautiful scenery in Northwest Arkansas.



DIRECTIONS: From 49: Follow E Wagon Wheel Rd and AR-264/W State Hwy 264 to Ervin McGarrah Rd. Continue on Ervin McGarrah Rd. Drive to Dead End Rd/Lake Point Dr.

16 9188 N PARK ROAD, ROGERS

ARTISAN DESIGN + CONSTRUCT
ArtisanDesignConstruct.com

6 Bed, 4.5 Bath, 4,518 SqFt
Price: *Unpublished*



ABOUT THE HOME

Welcome to 9188 N. Park Road, a custom-built 6BR/4.5BA home in Rogers with three stories of living and entertaining spaces. This stunning home features 1,064 sq. ft. of outdoor balconies alone, spread out over three levels so that you can take full advantage of the lake views and morning sunrises. The home is an entertainer's dream and features two full kitchens, a beverage bar, and a coffee bar. Plus, there's an outdoor grill station and fire pit on upper the balcony. This home wouldn't be complete without two master suites that feature luxury showers and large soaking tubs. You don't want to miss this dream home!



DIRECTIONS: I-49 Exit 85 to Walnut Street. Head East 3.6mi to N. 2nd Street. Turn left on N. 2nd Street for 0.3 mi to E. Locust Street. Turn right onto E. Locust Street (Hwy. 12) for 3.3mi to N. Park Road on left. Turn left on N. Park Road and proceed 0.2 miles. Project will be on the right prior to entrance to Prairie Creek Rec Area.

CELTIC CONSTRUCTION
CelticCustomHomes.com

4 Bed, 4.5 Bath, 5,500 SqFt
Price: \$1,400,000

ABOUT THE HOME

This one-of-a-kind modern custom home was designed by the clients with their lifestyle in mind. At 5500 sq. ft. over two levels, it has all that a family of five could want including a home office, open kitchen/dining/living concept with two story ceilings, two laundry rooms (one in the master closet), a study room, game room, media room, and screened in porch with a fireplace and TV looking out at the swimming pool. Sitting on one acre in the gated Southgate Estates this beauty ticks all the boxes.



DIRECTIONS: Online Showcase only.

18 169 WEST ELM LANE, SPRINGDALE

West Elm Estates

GB GROUP CONSTRUCTION
BuildWithGBGroup.com

4 Bed, 5.5 Bath, 4,330 SqFt
Price: Unpublished

ABOUT THE HOME

This true mid century craftsman home is one of a kind. The design was top priority from day one. From the low sloped metal roofs to the stand alone floor to ceiling interior stone fireplace you will see the desire to stay true to design and the attention to detail. This home features 4 bedrooms, 5 1/2 baths, a library, pool house, and a hearth room in this nearly 5000 SF home. The back patio and private pool courtyard is something you will never want to leave.



DIRECTIONS: Take ext 72 off of hwy 49. Turn West onto hwy 412. Head approximately 2 miles to hwy 112. Turn North on Hwy 112. Go to the next light and take a right onto Har-Ber Avenue. Then take the first right onto West Elm Lane. The parade home will be the last house on your left at the back cul-de-sac.



*Look for the Big **Red** Chair*

Notable Outdoor Living is Grand Lake's favorite source for quality outdoor furniture, we specialize in industry-leading brands, including Berlin Gardens LLC, Big Green Egg, Lovinflame, Iron Embers and Aura, whose products combine comfort and style with quality built to last a lifetime. Let us help you design your backyard paradise!





Lighting Northwest Arkansas Since 2007!

Add Beauty and Security with Professional Landscape Lighting!

At Your Service and **Lighten Up!** offer a comprehensive lineup of lighting services. We offer exterior lighting systems, bistro and accent lighting, and holiday lights. We are proud to provide the highest quality products and customer service in the region.

High Efficiency LED Fixtures | Commercial Grade Components | Lifetime Warranty





At **Encore Building Products**, customers will find a well-stocked, affordable retail store featuring product lines from some of the highest quality manufacturers. Our helpful and knowledgeable sales staff works hard to ensure each customer finds the exact floor covering, lighting, window, and building products they need. Visit us at our Springdale location today!

LIGHTING & FANS | FLOORING | DOORS | WINDOWS | FIREPLACES | HARDWARE | LUMBER | DECKING | MOULDING



A man wearing a dark blue ABC Supply Co. Inc. hoodie and a black and white ABC Supply Co. Inc. baseball cap stands in front of a red ABC Supply truck. The truck has the ABC Supply Co. Inc. logo on its side. The background is a solid blue banner with white text.

Thank You

ABC Supply Bethel Heights would like to thank the builders and contractors who trusted us to supply their projects.
Congratulations on a job well done!

For over 40 years, ABC Supply has delivered the best products and world-class services that make it easier for professional contractors to get their jobs done. As the largest wholesale distributor of roofing in the United States with over 840 locations and one of the nation's largest wholesale distributors of siding, windows and other select exterior building products, we aim to deliver the services that builders, residential roofing contractors, general contractors and remodelers need to be successful, grow their businesses and keep their customers' projects moving forward.



ROOFING • SIDING • WINDOWS • TOOLS
GUTTER • ACCESSORIES • AND MORE



**OVER 60
BRANDS**
of Appliances



METRO
APPLIANCES & MORE

Right Product. Right Price. Right Now.

801 Metro Place, Lowell

479-750-2200 | MetroAppliancesAndMore.com



Bringing our neighbors the most *essential services.*

**High-speed internet and reliable
power from local providers.**

When you are looking for a home, look for a home served by Ozarks Electric and OzarksGo. Ozarks Electric Cooperative brings reliable and affordable electricity to its members. OzarksGo provides high-speed internet, TV and phone service over an all-fiber network. Learn more and sign up at ozarksgo.net





Visit our new 4,000 square foot showroom! 1508 N 2ND ST. | ROGERS, AR 72756

UDI is a family-owned architectural millwork company operating in NWA since 1976. We specialize in:
STAIRS | WINDOWS-ALUMINUM CLAD/WOOD | DOORS | CUSTOM WOOD & IRON

We are equipped to customize and collaborate on projects for all shapes, sizes, and budgets. From grand visions to finishing touches, we deliver unwavering focus, care, and service.

(479) 925-1318 | SALES@UDI-INC.COM



SERVING OUR COMMUNITIES SINCE 1885

Our 250+ highly trained associates, including multiple in-house attorneys enable us to provide exceptional service for your residential and commercial closing experiences.

25 locations in Arkansas and SW Missouri



Expert in Title. Leader in Closing.



@wacotitle

wacotitle.com



@WACOTitleCompany



WELCOME TO EXCELLENCE

SAPPHIREREALTYNWA.COM | (479) 480-4880

LOOKING TO UPGRADE OR UPDATE YOUR SPACE?

Visit our Design Center to help make your dream a reality!

Check out state-of-the-art displays for cabinets, doors, flooring, moulding, roofing, siding, windows and more!



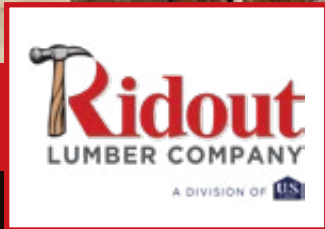
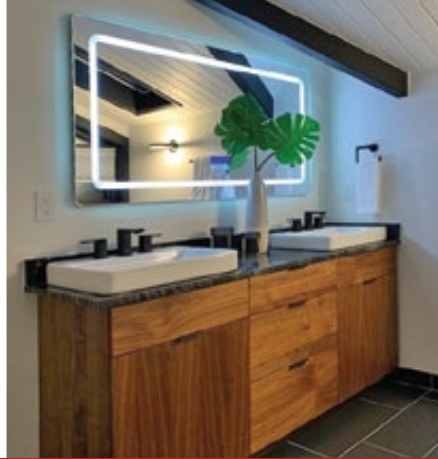
Request a free appointment with one of our in-house experts by scanning this code or visiting [MeeksMidwest.com](https://www.MeeksMidwest.com) today!



4446 W. Sunset Ave.
Springdale, AR 72766
(479) 751 - 0585



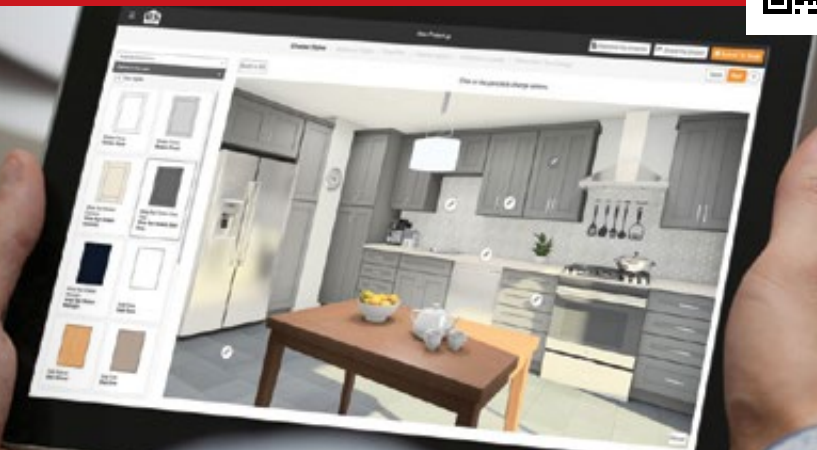
PROUDLY SERVING ARKANSAS AND MISSOURI SINCE 1919!



GET IT DONE RIGHT.



GET IT DONE RIGHT with
Cabinets, Flooring and More!
Visit RidoutLumber.com to
find a location near you.
Scan the QR Code and start
designing your dream kitchen
with our Kitchen Planner!



KIMBEL

MECHANICAL SYSTEMS

PLUMBING | HVAC | ELECTRICAL

866.582.3899
www.kimbel.com

**A Highly Trusted, Values
Driven, Compelling Force in
the Construction Industry**



Celebrating Home Builders in Northwest Arkansas



ONLINE BUILDERS SHOWCASE:

September 16-18

Join us from the comfort of your home as we tour homes from builders across Northwest Arkansas!

IN PERSON TOURS:

September 23 - 25

Friday - Saturday 10AM - 7PM

Sunday 12PM - 5PM

Meet builders in their Parade Homes for in-person tours.



PARTNER MEDIA

Partnering 4 MarketShare



partner-media.com

PRINT BROCHURES

Give home buyers something tangible - whether meeting in person, visiting a model, or attending a home show.

SOCIAL MEDIA

Be seen consistently by home buyers with scheduled posting packages on top social media networks.

DIGITAL BROCHURES

Allow home buyers to upload, download, email and share your home builder brochures. *NAHB reports builders with a downloadable brochure on their website can increase market share by 20%.*



Thank you to our Sponsors

Thank you to all of our sponsors that make this annual event possible!
Learn more at nwaparadeofhomes.com/sponsors

SUBDIVISION



RIVERWOOD
HOMES

PARADE



GOLD



JUDGE'S DINNER



AWARDS DINNER



SILVER



BRONZE



PRIZE



MEDIA



2021 Parade WINNERS



ONLINE PEOPLE'S CHOICE

Gold Winner - Celtic Construction | 6803 W. Southgate Estates Court, Rogers

Silver Winner - Brandon Schrock Custom Homes | 2998 Rom Orchard Road, Fayetteville

CATEGORY 1

Gold Winner - Buffington Homes | 2105 SW Hampton Ave, Bentonville

Silver Winner - Schuber Mitchell Homes | 611 Braeburn Court, Centerton

Gold Quality Winner - Buffington Homes | 2105 SW Hampton Ave, Bentonville

Silver Quality Winner - Schuber Mitchell Homes | 611 Braeburn Court, Centerton

CATEGORY 2

Gold Winner - Buffington Homes | 5806 West Sage Dr, Rogers

Silver Winner - Buffington Homes | 3757 W Grouse Road, Fayetteville

Gold Quality Winner - Buffington Homes | 3757 W Grouse Road, Fayetteville

Silver Quality Winner - Buffington Homes | 5806 West Sage Dr, Rogers

CATEGORY 3

Gold Winner - Calcon, Inc. | 300 SW Autumn Hills Road, Bentonville

Silver Winner - Calcon, Inc. | 406 SW Autumn Hills Road, Bentonville

Gold Quality Winner - Calcon, Inc. | 300 SW Autumn Hills Road, Bentonville

Silver Quality Winner - Lance Johnson Building Company | 8002 W Elsworth Street, Rogers

CATEGORY 4

Gold Winner - Sapphire Homes | 117 Averie Lane, Bentonville

Silver Winner - Brandon Schrock Custom Homes | 2998 Rom Orchard Road, Fayetteville

Gold Quality Winner - Brandon Schrock Custom Homes | 2998 Rom Orchard Road, Fayetteville

Silver Quality Winner - Sapphire Homes | 117 Averie Lane, Bentonville

CATEGORY 5

Gold Winner - The Stitt Group | 1305 South 8th Street, Rogers

NWA HBA BUILDER MEMBERS

A Modern Touch Construction and Remodeling | 2701 SE G St, Suite 9, Bentonville, AR 72712 | 479.900.9008 | amtremodel.com
A-Belle Design Build | 12972 Duke Hill Road, Bentonville, AR 72713 | 479.799.1790 | abelledesignbuild.com
Abshier Construction | 11648 Amy Avenue, Rogers, AR 72756 | 479.640.0518 | abshierconstruction.com
Anderson Custom Homes | 241 S. Elm Springs Road, Springdale, AR 72762 | 479.419.5501 | facebook.com/AndersoncustomhomesNWA
Arkatex Renovation-Concepts Company | 2807 Allen St., #413, Dallas, TX 75204 | 479.283.3797 | arkatexrenovation.com
Artisan Design + Construct Inc | 105 W. Elm Street, Ste. 216, Rogers, AR 72756 | 479.802.3988 | artisandesignconstruct.com
Beekman Builders | 1702 Beth Drive, Rogers, AR 72758 | 479.899.3943 | beekmanbuilders.com
Booth Building And Design LLC | 4887 Sagely Lane, Fayetteville, AR 72703 | 479.283.1055 | boothbuilding.com
Boulder Creek Homes | 4508 NE Birchgrove Place, Bentonville, AR 72712 | 479.685.9728
Brandon Schrock Construction & Custom Homes | 56 Yukon Way #3, Farmington, AR 72730 | 479.601.4650 | schrockdevelopments.com
Brittenum Construction Company, Inc. | 4034 N. Old Wire Road, Fayetteville, AR 72703 | 479.582.8732 | brittenumconstructioncompanyinc.com
Bruce Foster Frame & Log Const. Co. | 3568 Hwy 221 N, Berryville, AR 72616 | 870.423.3264
Buffington Homes of AR, LLC | 2826 E. Joyce Blvd, Ste 1, Fayetteville, AR 72703 | 479.251.1106 | buffingtonhomesar.com
Burckart Construction Inc. | 2302 SW I Street, Ste. 106, Bentonville, AR 72712 | 479.273.1881 | burckart.com
Calcon, Inc. | 10620 Hwy 72 West, Bentonville, AR 72712 | 479.273.5558 | calconinc.com
Cannon Homes & Remodels | 2566 E. Joyce Blvd., Fayetteville, AR 72703 | 479.877.7337 | cannonhomes.com
Celtic Custom Homes | 3075 N. Market Avenue, Suite 1, Fayetteville, AR 72703 | 479.582.1142 | celticcustomhomes.com
CMI Construction | 3525 Wagon Wheel Road, Ste. B, Springdale, AR 72762 | 479.717.2677 | cmiconstruction.com
Cobblestone Homes | PO Box 180428, Fort Smith, AR 72918 | 479.251.1111 | cobblestonehomesnwa.com
Conner Homes LLC | 4144 Carriage Crossing Lane, Springdale, AR 72762 | 479.283.2663 | connerhomesllc.com
Constellation Properties | PO Box 148, Bentonville, AR 72712 | 479.877.7539 | constellationprops.com
Coyle Construction, Inc | PO Box 565, Prairie Grove, AR 72753 | 479.267.5847
Craftsman Builders, Inc. | 3336 N Hughmount Road, Fayetteville, AR 72704 | 479.841.0767 | craftsmanbuildersnwa.com
Daniel Cowin Construction, LLC | 2041 Jesse James Road, Pineville, MO 64856 | 417.223.7000 | cowinconstruction.com
David Harris Construction | 809 S. 52nd Street, Rogers, AR 72758 | 479.696.0630 | dharrishomes.com
David S Goodman Construction, Inc | PO Box 5473, Bella Vista, AR 72714 | 479.876.5808 | goodman-homes.com
Decker Quality Construction LLC | PO Box 51, Centerton, AR 72719 | 479.426.3274 | dqchomes.com
Deeter Construction, Inc. | 2611 W. Monroe Ave., Lowell, AR 72745 | 479.616.1466 | deeterconstruction.com
DreamMaker Bath & Kitchen of NWA | 5100 W. Pauline Whitaker Parkway, Suite 106, Rogers, AR 72758 | 479.579.9800 | dreammaker-remodel.com/nwa
Eden's Home Repair & Remodeling, Inc. | 3065 American St, Ste E, Springdale, AR 72764 | 479.313.8371 | edenshrr.com
ELAN Creative LLC | 704 S. Main Street, Bentonville, AR 72712 | 479.268.8246 | elancreative.co
Frontier Building Company LLC | 612 S Mock Street, Prairie Grove, AR 72753 | 479.531.9495 | frontiernwa.com
GB Group Construction | PO Box 7734, Springdale, AR 72766 | 479.464.7336 | buildwithgbgroup.com
Habitat for Humanity Washington County | 1421 E. 15th Street, Fayetteville, AR 72701 | 479.582.2076 | habitatwashingtoncoar.org
Handyman Connection of NWA | 411 N. 40th St., Springdale, AR 72762 | 479.756.8250 | nw-arkansas.handymanconnection.com
Homes by Roth | 6077 SW Regional Airport Blvd, Bentonville, AR 72713 | 479.250.0524 | homesbyroth.com
Homes of Distinction, Inc. (HOD Homes) | PO Box 2333, Bentonville, AR 72712 | 479.531.4758 | myhomesofdistinction.com
Horton Homes, Inc. | 6410 Timber Ridge Dr, Rogers, AR 72758 | 479.903.0870 | shadowvalleyinfo.com/DeanHorton.asp
HVM Construction & Remodeling | 1431 LeChesnay Drive, Centerton, AR 72719 | 479.254.0134
Jack Hales Construction Company, Inc. | 5206 S 44th St, Rogers, AR 72758 | 479.631.2893
JAG Fuller, LLC | 18578 Habberton Road, Springdale, AR 72764 | 479.466.4734
Jairo Home Builders LLC | 5839 W. Dot Tipton Road, Fayetteville, AR 72704 | 479.445.4148 | jairohomebuilderllc.net
Janacek Remodeling | 1880 S 26th St., Rogers, AR 72758 | 479.621.0565 | janacekremodeling.com
JLCH Construction | 459 Oxen Ln., West Fork, AR 72774 | 479.466.1489 | jlchconstruction.com
Johnson Builders Group | PO Box 861, Rogers, AR 72757 | 479.366.1127 | johnsonbuildersgroup.com
Key Concepts | 502 Oakwood St, Lowell, AR 72745 | 501.772.7131 | jsskey.com
Lance Johnson Building Company | 1200 N. 40th Street, Springdale, AR 72764 | 479.717.2952 | lancejohnsonbuildingcompany.com
Landmarc Custom Homes | 1224 S. Maestri Road, Springdale, AR 72762 | 479.419.9639 | landmarccustomhomesnwa.com
Leadership Properties | 7304 S Yale Ave, Tulsa, OK 74136 | 918.808.6792 | leadershippropertiesnwa.com
LRD Construction LLC | 16670 E Hwy 412, Springdale, AR 72764 | 479.750.4422 | lrdconstruction.com
Martin Building Group | PO Box 9598, Fayetteville, AR 72703 | 479.957.3535 | martinbuildinggroup.com
NWA Barndominiums | 2608 North 2nd Street, Suite 106, Rogers, AR 72756 | 479.278.2436 | nwabarndominiums.com
Oz Homes, LLC | PO Box 2627, Bentonville, AR 72712 | 479.877.0499 | houzz.com/professionals/home-builders/oz-homes-llc-pfvwus-pf~221395229
Parsley Custom Homes | 10428 S Morning Star Rd, Bentonville, AR 72713 | 479.409.6559 | parsleycustomhomes.com
Perrin Custom Homes | 4203 Quelinda Drive, Rogers, AR 72758 | 479.586.4625 | homesbyperrin.com
Pick-It Construction, Inc. | 10024 N Campbell Rd, Fayetteville, AR 72701 | 479.973.5109 | pickitconstruction.com
Preston and Company, Inc. | 801 S. Rainbow Road, Rogers, AR 72758 | 479.273.2266 | prestonandco.net
Rare Bird Builders, LLC | 3608 N. Steele Blvd, Suite 104, Fayetteville, AR 72703 | 479.270.8835 | rarebirdbuilders.com
Rausch Coleman Homes NWA | 4058 N College Ave, Suite 300, Fayetteville, AR 72703 | 479.455.9090 | rauschcolemanhomes.com
Riggins Construction & Development | 1204 E Joyce Blvd, Ste 102, Fayetteville, AR 72703 | 479.582.9597 | rigginscustomhomes.com

Riverwood Homes, LLC | 3420 N. Plainview Avenue, Fayetteville, AR 72703 | 479.316.7440 | riverwoodhomesnwa.com
Sapphire Homes of AR | 101 Averie Lane, Bentonville, AR 72713 | 479.777.1141 | sapphirehomesnwa.com
Schuber Mitchell Homes | 1621 Anderson Drive, Webb City, MO 64870 | 417.626.7000 | schubermitchell.com
Sunrise Developers | 354 Angel Falls Lane, Springdale, AR 72762 | 479.422.5515 | sunrisehomesnwa.com
Tall Oaks Construction, LLC | 5050 Rocky Ridge Rd, Bentonville, AR 72712 | 479.685.3204 | talloaksconstruction.com
The Stitt Group | 1301 S 8th St, Rogers, AR 72756 | 479.636.8745 | thestittgroup.com
Tim McMahon Building Company, Inc. | 2355 E. Golden Oak, Fayetteville, AR 72703 | 479.236.4663 | timbuilds.houzz.com
United Built Homes | 2790 S. Thompson, Ste 102, Springdale, AR 72764 | 479.443.5281 | ubh.com
Vick Enterprises, LLC | 618 S. Thompson Street, Springdale, AR 72764 | 479.725.2565

NWA HBA ASSOCIATE MEMBERS

360 Painting of NWA | 8054 Bobwhite Lane, Bentonville, AR 72712 | 479.431.5450 | 360painting.com/nwa
40/29 - Hearst Television | 2809 W. Ajax Avenue, Suite 200, Rogers, AR 72758 | 479.631.4029 | 4029tv.com
AAA Business Systems | 2715 N. Drake Street, Fayetteville, AR 72703 | 479.442.4185 | aaabm.com
ABC Block and Brick | 2205 S Arkhola Dr, Springdale, AR 72764 | 479.751.2198 | abcblock.com
ABC Supply | 409 E Apple Blossom Ave, Bethel Heights, AR 72764 | 479.750.4848 | abcsupply.com
Abstract Granite Solutions | 142 N. Maestri Road, Springdale, AR 72762 | 479.250.1463 | abstractgranite.com
Acme Brick Tile & Stone | 4877 N. 45th St., Springdale, AR 72762 | 479.756.0550 | brick.com
Adams Pest Control | 13199 Sharp Springs Road, Lowell, AR 72745 | 479.567.5160 | adamspestnlr.com
Advanced Body Scan of Tulsa | 5711 E. 71st St., Ste. 100, Tulsa, OK 74136 | 918.879.6161 | advancedbodyscanoftulsa.com
Advantage Title & Escrow LLC | 2744 Millenium Place, Ste 3, Fayetteville, AR 72703 | 479.301.2440 | goadvantagetitle.com
Agape H2o | 12920 Prospect Lane, Neosho, MO 64850 | 417.665.1234 | agapeh2o.com
Anchor Stone Company | 4124 S. Rockford Ave., Suite 201, Tulsa, OK 74105 | 417.226.4406 | anchor-stone.com
Arkansas Security | 444 N. 48th Street, Springdale, AR 72762 | 479.935.9911 | nwaalarm.com
Armstrong Bank | 3942 Elm Springs Road, Springdale, AR 72762 | 479.725.0823 | armstrongbank.com
Arvest Bank - Fayetteville | PO Box 1327, Fayetteville, AR 72702 | 479.444.5668 | arvest.com
Arvest Bank - Rogers | 103 South Bloomington, Lowell, AR 72745 | 479.770.1017 | arvest.com
Atlas Safe Rooms | 3929 E 7th Street, Suite I, Joplin, MO 64801 | 417.680.5118 | atlassaferooms.com
AV Design Consultants Inc | 264 Albano Drive, Springdale, AR 72762 | 479.365.2201 or 479.225.2466 | avdci.com
A-Z Overhead Doors Inc. | 710 East Jefferson, Siloam Springs, AR 72761 | 479.524.2744 | a-zoverheaddoors.com
Backyard Designs | 3078 McRay Ave., Springdale, AR 72762 | 479.927.2882 | backyarddesignsnwa.com
Bassett Furniture | 3505 N. Steele Blvd., Fayetteville, AR 72703 | 479.571.0200 | bassettfurniture.com
BBB Septic & Portable Toilet Service | PO Box 1271, Bentonville, AR 72712 | 479.271.0058 | bbbseptic.com
BHC Insurance | 1626 Empire Street, Rogers, AR 72745 | 479.650.0620 | bhca.com
Black Hills Energy | 1811 E. Borick Drive, Fayetteville, AR 72701 | 479.582.7893 | blackhillsenergy.com
Black Tie Landscaping | 678 S. Pianalto Road, Springdale, AR 72762 | 479.651.8612 | blacktienwa.com
Brandi Mallard - Executive Broker | 5100 W Park Ave., Suite 122, Rogers, AR 72758 | 479.721.8599 | brandimallardrealestate.com
BRAYN Consulting LLC | 10620 Southern Highlands Parkway, Suite 110-473, Las Vegas, NV 89141 | 888.773.8356 | brayn.com
Brown's Drywall & Supply Company | 1507 S West End Street, Springdale, AR 72764 | 479.751.9393
Budget Blinds of NWA | 122 N Virginia St, Springdale, AR 72764 | 479.751.6655 | budgetblinds.com/Springdale
Burton Pools & Spas | 725 S 48th Street, Springdale, AR 72762 | 479.756.5511 | burtonpools.com
Cambria Quartz Surfaces | 3200 Brad St., Springdale, AR 72764 | 952.873.3060 | cambriausa.com
Cameron Ashley Building Products | 1205 ESI Drive, Springdale, AR 72764 | 479.370.3704 | cameronashleybp.com
Capital One | 1680 Capital One Drive, McLean, VA 22102 | 901.201.8736 | capitalone.com
Carroll Electric Co-op Corp | PO Box 4000, Berryville, AR 72616 | 870.423.2161 | carrollecc.com
CitiScapes Magazine | 231 West Mountain Street, Fayetteville, AR 72701 | 479.684.2580 | citiscapes.com
City Title & Closing LLC | 1450 E Zion Road, Ste 7, Fayetteville, AR 72703 | 479.935.4177 | citytitlellc.com
Color Your World, Inc. | 2047 Cobblestone St., Springdale, AR 72762 | 479.236.5932
Command Pest | 833 Jerome Drive, Springdale, AR 72762 | 800.468.2847 | commandpest.com
Computer Consulting Service | PO Box 669, West Fork, AR 72774 | 888.442.4933 | ccsmisp.com
Conner & Winters | 4375 N. Vantage Drive, Suite 405, Fayetteville, AR 72703 | 479.582.5711 | cwlaw.com
Conserva Irrigation of NW Arkansas | 853 Banz Rd, Rogers, AR 72758 | 479.935.2700 | conservairrigation.com/nw-arkansas
Corey Beck Painting | 479.502.7103
Country Cabinets, Inc. | 17179 Marshall St, Garfield, AR 72732 | 479.359.3758
Country Home Elevator & Stair Lifts | 1549 E 559th Road, Brighton, MO 65617 | 800.898.5090 | arkansashomeelevator.com
Cox Communities | 4901 S. 48th St., Springdale, AR 72762 | 479.717.3738 | cox.com
Culligan of Northwest Arkansas | 305 Commercial Ave, Lowell, AR 72745 | 479.717.2960 | hallswater.com
Custom Electronics, Inc. | 304 W. Apple Blossom, Lowell, AR 72745 | 479.631.0268 | customelectronics.com
D&G Home Solutions (Dramis Hardwood Floors) | 2275 S. School Avenue, Fayetteville, AR 72701 | 479.442.9015 | dramishardwoodfloors.com
David's Roofing Company, Inc. | 3550 E. Heritage Parkway, Farmington, AR 72730 | 479.846.2113 | davidroofinginc.com
DB Fence and Land | 412 NW Cowan Ave., Gentry, AR 72734 | 479.544.5314 | dbfencecompany.com
Diamond Petra Stone | 1947 N. Main Street, Cave Springs, AR 72718 | 479.248.7866 | diamondpetrastone.com

Elite Roofing of Arkansas (KDBS Group, LLC) | 3407-B Industrial Park Rd., Van Buren, AR 72956 | 479.478.8668 | eliteroofingar.com
Encore Flooring and Building Products | 3905 S. Thompson, Springdale, AR 72764 | 479.361.8900 | encoregroupusa.com
ESPN Radio 99.5/KAKS | 2704 American, Springdale, AR 72764 | 479.303.2034 | hitthatline.com
Evans Go Green | 1123 Crutcher Street, Springdale, AR 72764 | 479.361.8067 | evansgogreen.com
Executive Flooring Solutions, Inc. | 709 SW A Street, Suite 3, Bentonville, AR 72712 | 479.668.4474 | executiveflooringinc.com
F & S Custom Siding Inc. | 12291 S. Whitehouse Road, Elkins, AR 72727 | 479.643.3874
Fairway Independent Mortgage Corporation | 111 W Central Ave, Bentonville, AR 72712 | 479.633.4914 | fairwayindependentmc.com/Kim-M-Jennings
Farris Insurance Agency, Inc. | PO Box 345 , Springdale, AR 72765 | 479.756.6330 | farrisinsurance.com
Ferguson Enterprises LLC | 801 Shaver Street, Springdale, AR 72762 | 479.927.2793 | ferguson.com
First National Bank of NWA | 3553 N Steele Blvd, Fayetteville, AR 72703 | 479.856.7842 | fnbnwa.com
First Security Bank | 2863 W Sunset Ave, Springdale, AR 72762 | 479.750.5652 | fsbank.com
First Star Exteriors | 256 S. Maestri, Springdale, AR 72762 | 479.267.4800 | firststarexteriors.com
Firstar Bank | 6200 Massard Rd., Fort Smith, AR 72916 | 479.551.2662 | firstarbank.mymortgage-online.com/index.html
Flat Branch Home Loans | 2905 S Walton Blvd #13, Bentonville, AR 72712 | 479.715.4339 | fbhl.com
Floor Coverings International of NWA | 331 Archibald Yell Blvd, Fayetteville, AR 72701 | 479.368.0600 | nwarkansas.floorcoveringsinternational.com
Flooring America by Carpet Smart | 411 N Goad Springs Rd, Suite 101, Lowell, AR 72745 | 479.750.0117 | flooring-america.bycarpetsmart.com
Foster Insulation | PO Box 6008, Springdale, AR 72766 | 479.365.2767 | fosterinsulation.com
Foster Roofing | 3357 Wagon Wheel Road, Springdale, AR 72762 | 479.751.2300 | roofwithfoster.com
Four Seasons Landscaping | 3437 Old Highway 68, Springdale, AR 72764 | 479.595.0685 | nwafourseasonslandscaping.com
Four Seasons Sunrooms | 850 E Henri De Tonti Blvd, Springdale, AR 72762 | 479.306.9900 | ozarksunrooms.com
Frank Sharum Landscape Design, Inc | 750 S Maestri Rd #9080, Springdale, AR 72762 | 479.361.9180 | sharums.com
Froogel Architects, PLLC | 13103 Rosario Road, Garfield, AR 72732 | 479.644.1366
G & S Insulating | 670 E Laura, Springdale, AR 72762 | 479.751.6080 | gandsinsulating.com
Generations Bank | 3665 N. Investment Drive, Fayetteville, AR 72703 | 479.439.4997 | mygenerations.bank
Great American Title | 3201 NE 11th, Ste. 17, Bentonville, AR 72712 | 479.319.2093 | gatozarks.com
Groundworks (Foundation Recovery Systems) | 1820 N. Barnes Avenue, Springfield, MO 65803 | 757.333.0685 | foundationrecoverysystems.com
Hearth & Home | 522 S Bloomington St, Lowell, AR 72745 | 479.770.5408
Highlands Residential Mortgage | 4201 W New Hope Rd #203, Rogers, AR 72758 | 479.802.5039 | lynseycamp.com
Hoffman Kitchen & Bath | 3046 N. Thompson, Springdale, AR 72764 | 479.756.2704 | hfccountertops.com
Home Outlet of Rogers | 2223 W Walnut, Rogers, AR 72756 | 479.621.7090 | bartonshome.com
Hunt-Rogers Materials LLC | 21202 N. Parsons Road, Springdale, AR 72764 | 479.751.6343 | rogersgroupinc.com
Integrity Distributors | 328 South 40th St., Springdale, AR 72762 | 479.717.6700 | integritydistributorsinc.com
J & B Supply Inc. | 788 W. Morris Ave., Springdale, AR 72764 | 479.751.1200 | jandbsupply.com
Jack Wills Casual Furniture Company | 5891 S Garnett Road, Tulsa, OK 74146 | 918.459.3730 | jackwills.net
Jaime Stanley- American National Insurance | 2211 W Main Dr, Fayetteville, AR 72704 | 479.435.7313 | mlagents.americannational.com/jaimestanley-17084
Jim's Quality Cabinets, Inc. | 14487 Gann Ridge Rd, Garfield, AR 72732 | 479.451.8838
Kimbel Mechanical Systems Inc | 1936 N. Shiloh Drive, Ste 1, Fayetteville, AR 72704 | 479.756.1099 | kimbelmechanical.com
Kimbel Service | 9310 E. Wagon Wheel Rd., Springdale, AR 72764 | 479.231.1040 | kimbelservice.com
Kitchen Craft | 4129 United Avenue, Mount Dora, FL 32757 | 352.483.7600 ext. 206 | waterlesscookware.com
Kitchen Tune-Up | 5201 S 42nd St, Rogers, AR 72758 | 479.320.9090 | kitchentuneup.com/rogers-ar
Kozyheat Fireplaces Inc. | 3706 N.W. Frontage Rd., Ste. 2, Bentonville, AR 72712 | 479.464.0098 | kozy-heat.com
Labormax Staffing | 2301 W. Walnut #5, Rogers, AR 72756 | 479.899.6403 | labormax.net
Lamar NW Arkansas | PO Box 10352, Fayetteville, AR 72703 | 479.442.0300 | lamar.com
Lenders Title Company | 3761 N Mall Ave, Suite 1, Fayetteville, AR 72703 | 479.444.3333 | lenderstitle.com
Lighten Up! Outdoor Lighting (At Your Service NWA) | PO Box 9101, Fayetteville, AR 72703 | 479.442.8873 | lightenupnwa.com
Lighthouse Financial | 3704 W. Southern Hills Blvd., Ste. 100, Rogers, AR 72758 | 479.696.8234 | lhfinancial.net
Lighting Emporium, Inc. | 5610 N Thompson St, Springdale, AR 72764 | 479.751.8184 | lightingemporium.com
Lisa's Louvers of NWA, LLC | 10107 Noah Road, Gravette, AR 72736 | 479.640.7311 | lissalouversnwa.com
Lowe's | 300 N 46th St, Rogers, AR 72756 | 479.936.9700 | lowes.com
M & M Tile Co. | PO Box 46, Tontitown, AR 72770 | 479.361.2551 | m-mtile.com
M&E Sales | 150 W 88th St #114, Bloomington, MN 55420 | 952.884.0326
McCauley Services | PO Box 60, Bryant, AR 72089 | 501.315.3117 | callmccauley.com
Meek's-The Builder's Choice | PO Box 6160, Springdale, AR 72766 | 479.751.0585 | meeksmidwest.com
Metro Appliances & More | 801 Metro Place, Lowell, AR 72745 | 479.750.2200 | metroappliancesandmore.com
Miller Glass & Mirror | 112 N Elm Springs Rd, Springdale, AR 72762 | 479.248.7270
Minuteman Press | 3202 S. Thompson, Springdale, AR 72764 | 479.361.3581 | springdale-ar.minutemanpress.com
Mister Sparky | 3068 N Thompson, Springdale, AR 72764 | 479.631.2278 | mistersparkynwa.com
Modern Movers, LLC | 2242 N. College Ave, Fayetteville, AR 72703 | 479.402.6683 | modernmoversllc.com
Moix RV | 2650 Wagon Wheel Road, Springdale, AR 72762 | 479.751.2174 | moixrv.com
My Arkansas Garage | 13243 Puppy Creek Road, Suite 2, Springdale, AR 72762 | 479.936.9735 | myarkansasgarage.com
Natural State Construction Solutions | 1 Parton Lane, Bella Vista, AR 72714 | 479.640.7800 | naturalstateconcrete.com
New Century Counter Tops Inc | 1774 Dentech Dr, Springdale, AR 72764 | 479.756.0893 | newcenturycountertops.com
Northwest Arkansas Democrat Gazette | 212 N East Ave, Fayetteville, AR 72701 | 479.442.1700 | nwaonline.com
Notable Outdoor Living | 4600 US Hwy 59 N, Grove, OK 74344 | 918.801.2725 | notableoutdoor.com

NWA C & S Plumbing LLC | 479.790.3527 | fixyourpipes.com
NWA Home Matters | 417 Twin Falls Drive, Farmington, AR 72730 | 479.267.5900 | nawahomematters.com
Overhead Door Company of Springdale, Inc. | 800 Clayton, Springdale, AR 72764 | 479.751.5921 | ohdoor-spd.com
Ozark Kitchens & Baths | 920 71 Plaza Ct., Suite B, Springdale, AR 72764 | 479.321.3834 | ozarkkitchens.com
Ozarks Electric Cooperative Corp/OzarksGo | 3641 Wedington Dr, Fayetteville, AR 72702 | 479.684.4614 | ozarksecc.com
Pace X Coatings | 12727 East Gaiche Road, Gentry, AR 72734 | 479.236.3870 | pacexcoatings.com
Palma Stucco & Plaster | 2519 W. Perry Rd., Rogers, AR 72758 | 479.202.5279 | palmastucco.com
Partner Media, LLC | 12900 Metcalf Ave., Suite 170, Overland Park, KS 66213 | 913.303.4411 | partner-media.com
Partners Bank | 3632 Johnson Mill Road #107, Springdale, AR 72762 | 479.231.3281 | partnersbnk.com
Paschal Air, Plumbing & Electric | 280 N. Maestri Rd, Springdale, AR 72764 | 479.751.0195 | paschalcorp.com
Pella Products of AR | 1003 SE 14th Street Ste 19, Bentonville, AR 72712 | 479.464.8800 | pellabrand.com/arkansas-missouri
Pinnacle Media LLC (Univision) | 4028 College Ave., Ste. 245, Fayetteville, AR 72703 | 479.445.6238 | latinotvar.com
Plantation Pest Management, Inc. | 708 W. 15th St., Fayetteville, AR 72703 | 479.316.2958 | plantationpest.com
Plunkett Distributing Co Inc | 1010 South Y Street, Fort Smith, AR 72901 | 479.782.2190 | facebook.com/Plunkett-Distributing-Co-inc-111081898954822
Precision Garage Door NWA | 1907 Town West Drive, Rogers, AR 72756 | 479.282.3042 | precisiondoorwa.com
ProSource Wholesale | #2 SW C Av, Lawton, OK 73501 | 479.279.6399 | prosourcewholesale.com/showrooms/ar-prosource-of-northwest-arkansas
Prudential Advisors | 5506 W. Walsh Lane, Suite 110, Rogers, AR 72758 | 479.879.5062 | prudential.com/advisor/joshua-barnard
Ram Jack of Oklahoma & Arkansas | 120 W. 7th St., Ada, OK 74820 | 800.522.3656 | ramjack.com
Red River Brick | 320 N Bloomington St, Suite A, Lowell, AR 72745 | 479.659.0896 | redriverbrick.com
Regions Mortgage | 1465 E Joyce Blvd, Fayetteville, AR 72703 | 479.871.6333 | regions.com/personal-banking/mortgages
Renewal by Andersen | 3168 S. 108th E. Ave., Ste 315, Tulsa, OK 74146 | 918.876.4901 | arkansaswindowsdoors.com
Renewed Wood and Concrete | 2231 N Lowell Road, Suite H4, Springdale, AR 72764 | 479.659.9663 | renewedwoodandconcrete.com
Rich Sales | 23715 Hwy 10, Little Rock, AR 72223 | 501.868.9711 | richsales.net
Ridout Lumber Company | 2195 N Gregg Ave, Fayetteville, AR 72703 | 479.587.8900 | ridoutlumber.com
Robertson Professional Media, LLC | 1732 N. Garland, Fayetteville, AR 72703 | 479.530.9009 | robertsonpromedia.com
Rock Mortgage | 5417 West Pinnacle Point Drive, Suite 201, Rogers, AR 72758 | 479.321.3355 | blrmortgage.com
Rogers Insurance Agency Inc | 2809 W Ajax Avenue, Ste 300, Rogers, AR 72758 | 479.636.4551 | rogers-insurance.com
Rudolph's Home Services | 3024 W Perry Road, Rogers, AR 72758 | 479.268.3812 | thefurnituremd.com
RW Supply & Design | 5427 Market Street, Bethel Heights, AR 72764 | 479.357.8303 | realwoodfloors.com
S & G Carpet | 532 Skylar Street, Springdale, AR 72762 | 479.957.6494 | sgcarpet.com
Sam's Furniture | 4326 Hidden Creek Lane, Springdale, AR 72762 | 479.318.2751 | samsfurniture.net
Screenmobile of Northwest Arkansas | PO Box 7026, Siloam Springs, AR 72761 | 479.715.4600 | screenmobile.com/northwest-arkansas
Seal Smart | 407 13th St., Monett, MO 65708 | 417.235.4227 | sealsmart.com
Seaside Pools Inc | PO Box 781, Springdale, AR 72765 | 479.756.6543 | seasidepools.com
Service Titan, LLC | 13243 Puppy Creek Road, Suite 5, Springdale, AR 72762 | 479.418.9417 | servicetitanusa.com
Sherwin Williams-Rogers | 2919 W. Walnut, Rogers, AR 72756 | 479.636.3270 | sherwin-williams.com
ShiningStar Interactive | 7489 Carlisle Road, Rossville, PA 17358 | 717.502.4588 | shiningstarinteractive.com
Signature Storm Shelters NWA | PO Box 739, Lowell, AR 72745 | 479.409.6559
SMG - Standard Materials Group | 4530 N. Oak Street, Springdale, AR 72766 | 479.750.0000 | standardmaterials.com
Southwestern Electric Power Company | 101 W. Township Street, Fayetteville, AR 72703 | 479.973.2404 | swepco.com
Square One Truss, Inc | 1091 Hwy 45, Fayetteville, AR 72703 | 479.439.0320 | square1truss.com
Stabil Loc Systems LLC | 2075 Long Street, Springdale, AR 72764 | 479.282.9298 | stabil-loc.com
Starts Data, LLC | 301 N. Hughes Street, Huntsville, AR 72740 | 479.855.7700 | startsdata.com
Steve's Plumbing, LLC | 721 Rivera Drive, Rogers, AR 72758 | 479.631.8804 | joggingplumber.com
Summers Well Drilling & Pumps Inc. | 51695 S. 727 Rd., Colcord, OK 74338 | 479.736.2089 | summerswelldrilling.com
SunPro- ADT Solar | 1003 Century Street, Springdale, AR 72762 | 479.871.8971
Superior Sleep Experience | 101 SE 29th Terr., Suite A, Lees Summit, MO 64082 | 816.598.4919 | supsleep.com
Surfco Restoration & Construction LLC | 4500 S School Ave, Ste C, Fayetteville, AR 72701 | 479.287.6205 | surfcorestoration.com
SWEPCO EE Programs - CLEAResult | PO Box 9567, Fayetteville, AR 72703 | 479.935.4953 | clearesult.com
The Advertising Guys | 14963 Park Ridge Drive, Lowell, AR 72745 | 479.755.5621 | theadvertisingguys.com
The Wood Floor Gallery | 13465 Puppy Creek Rd, Ste G, Springdale, AR 72762 | 479.872.0102 | woodfloorgallery.net
Tornado Place of Arkansas | 2610 Storage Pkwy, Rogers, AR 72756 | 479.231.5227 | tornadoplace.com
Townzen Tile & Laminate | 13241 Puppy Creek Rd, Suite 6, Springdale, AR 72762 | 479.751.4043 | townzentile.com
Twin Oaks Custom Cabinets Inc | 4204 JB Hunt Dr, Ste 60, Rogers, AR 72758 | 479.273.7182 | twinoakscabinets.com
UDI Inc | 1508 N 2nd Street, Rogers, AR 72756 | 479.925.1318 | grandopenings1.com
United Federal Credit Union | 6706 W. Sunset, Springdale, AR 72762 | 479.358.8317 | unitedfcu.com
USA Mortgage | 2020 East Joyce Street, Suite 1, Fayetteville, AR 72703 | 479.225.9775 | usamortgage.com
Verser Cabinets of NWA Inc | 2351 W Hudson, Rogers, AR 72756 | 479.636.3941 | houzz.com/pro/versercabinets/verser-cabinet-shop
WACO Title | 2592 S. 48th St., Springdale, AR 72762 | 479.770.6700 | wacotitle.com
Weather Barr Windows & Doors | 3901 Elliot Ave, Springdale, AR 72762 | 479.751.1204 | weatherbarr.com
West Termite & Pest Management Inc | PO Box 1520, Lowell, AR 72745 | 479.927.9892 | westtermite.com
Wholesale Central Vacuum, Inc | 1900 N Lowell Road, Springdale, AR 72764 | 479.750.2528 | centralvaccentral.com
Willtech Enterprises Inc | PO Box 261, Siloam Springs, AR 72761 | 479.524.2422 | willtech.com
Window World of the Ozarks | 5725 N Thompson Street, Springdale, AR 72764 | 479.725.2450 | windowworld.com



NWAHBA.COM | (479) 751-6688
2022 LONG ST. C, SPRINGDALE, AR 72764

Follow us on Facebook and Instagram.

f @nwahomebuilders | @nwaparadeofhomes
@ @nwahomebuilders | @nwaparadeofhomes